



**MOUNT MARY  
VINEYARD  
YARRA VALLEY**



**Mount Mary** is a family owned, **single vineyard estate** located in the heart of the Yarra Valley. Established in **1971** by John and Marli Middleton, **one of the first** vineyards planted in the resurgence of the Yarra Valley as a **premium wine** producing region. The first plantings were completed by mid-1972 and today Mount Mary has 40 acres under vine representing **18 varieties**. The four Mount Mary Vineyard estate wines are comprised of two blends traditionally grown and made in Bordeaux, France (Quintet and Triolet) and two varieties traditionally grown and made in Burgundy, France (Pinot noir and Chardonnay).



Mount Mary	Vintage	Rating	Stock	Original	Special Offer	
Mount Mary Quintet	2003	JH94	5	\$530	<b>\$498</b>	<a href="#">Buy Now</a>
Mount Mary Quintet	2004	JH95	12	\$530	<b>\$498</b>	<a href="#">Buy Now</a>
Mount Mary Quintet	2005	JH95	10	\$530	<b>\$498</b>	<a href="#">Buy Now</a>
Mount Mary Quintet	2008	JH90 / JS90	30	\$530	<b>\$498</b>	<a href="#">Buy Now</a>
Mount Mary Quintet (1.5L)	2008	JH90 / JS90	20	\$940	<b>\$890</b>	<a href="#">Buy Now</a>

Tasting Notes:

#### **MOUNT MARY VINEYARD QUINTET 2003**

**James Halliday 94:** *“Good colour; considerable depth and power to the array of cassis, blackcurrant and blackberry fruit; very good texture and structure; abundant fine tannins and controlled oak”*

#### **MOUNT MARY VINEYARD QUINTET 2004**

**James Halliday 95:** *“Excellent hue though not particularly deep; a classic, understated Mount Mary style, beautiful fruit/oak/tannin balance; cassis and blackcurrant dominate, then silky tannins on a very long finish”*

#### **MOUNT MARY VINEYARD QUINTET 2005**

**James Halliday 95:** *“Supremely graceful and fine in typical Mount Mary style; the long and silky palate has a tapestry of red and black fruit flavours, the finish long and satisfying, the aftertaste lingering for minutes.”*

#### **MOUNT MARY VINEYARD QUINTET 2008**

**James Halliday 90:** *“Light colour; very savoury and slightly minty overtones to the red berry fruits; surprisingly light-bodied for the vintage”*

# Mount Mary Vineyard Quintet Magnum 2008



Original Price \$940

**Special Price \$890**

The Mount Mary Vineyard estate wines are **premium handcrafted wines** produced in limited quantities. They are the result of the season and the vineyard in which they were grown. Each wine captures a sense of time and place.

**Colour:** Deep dark red.

**Nose:** Filled with ripe mulberry, cedar, dark cherry and spice followed by cigar box end notes.

**Palate:** Elegance and grace with flavours of mulberry, blackcurrant and dark cherry, followed by some spice, cedar and a touch of cigar box. Super fine grained well integrated tannin structure. Long aftertaste.

**JAMES HALLIDAY: 90**

**JAMES SUCKLING: 90**

**BUY NOW**

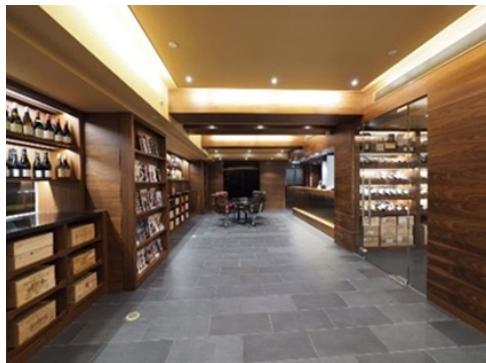
All wines subject to final confirmation and on first come first serve basis. For order & enquiries, please contact us at (852) **3154 9570** or Wechat / Whatsapp at (852) **6481 0000** or email to [info@wineworld.com.hk](mailto:info@wineworld.com.hk).

Free delivery for order > \$3,000. For orders below \$3,000, can arrange pick up at shop in Western District—located 4 minutes away from Sai Ying Pun MTR station. Promotion offer last until 16 September, 2017

**Free delivery for order > \$3,000**

**Pick up available at our shop:**

1/F, Le Pinnacle, Block 3, Connaught Garden, 155 Connaught Road West, Western District



## WineWorld Retail Showroom NOW OPENED

1/F, Le Pinnacle, Block 3, Connaught Garden, 155 Connaught Road West, Western District

Opening hours:  
Mon-Sat 10am-9pm,  
Sun & Public Holiday close



Regards,

Wineworld Team

(852)3154 9570 / 6481 0000

[www.wineworld.com.hk](http://www.wineworld.com.hk)

[www.winedeals.com.hk](http://www.winedeals.com.hk)

[www.wineworldexchange.com](http://www.wineworldexchange.com)

If you wish not to receive our wine promotions in the future, please write to [unsubscribe@wineworld.com.hk](mailto:unsubscribe@wineworld.com.hk) to remove from our list.